

How to use an IP Speaker on an NVR

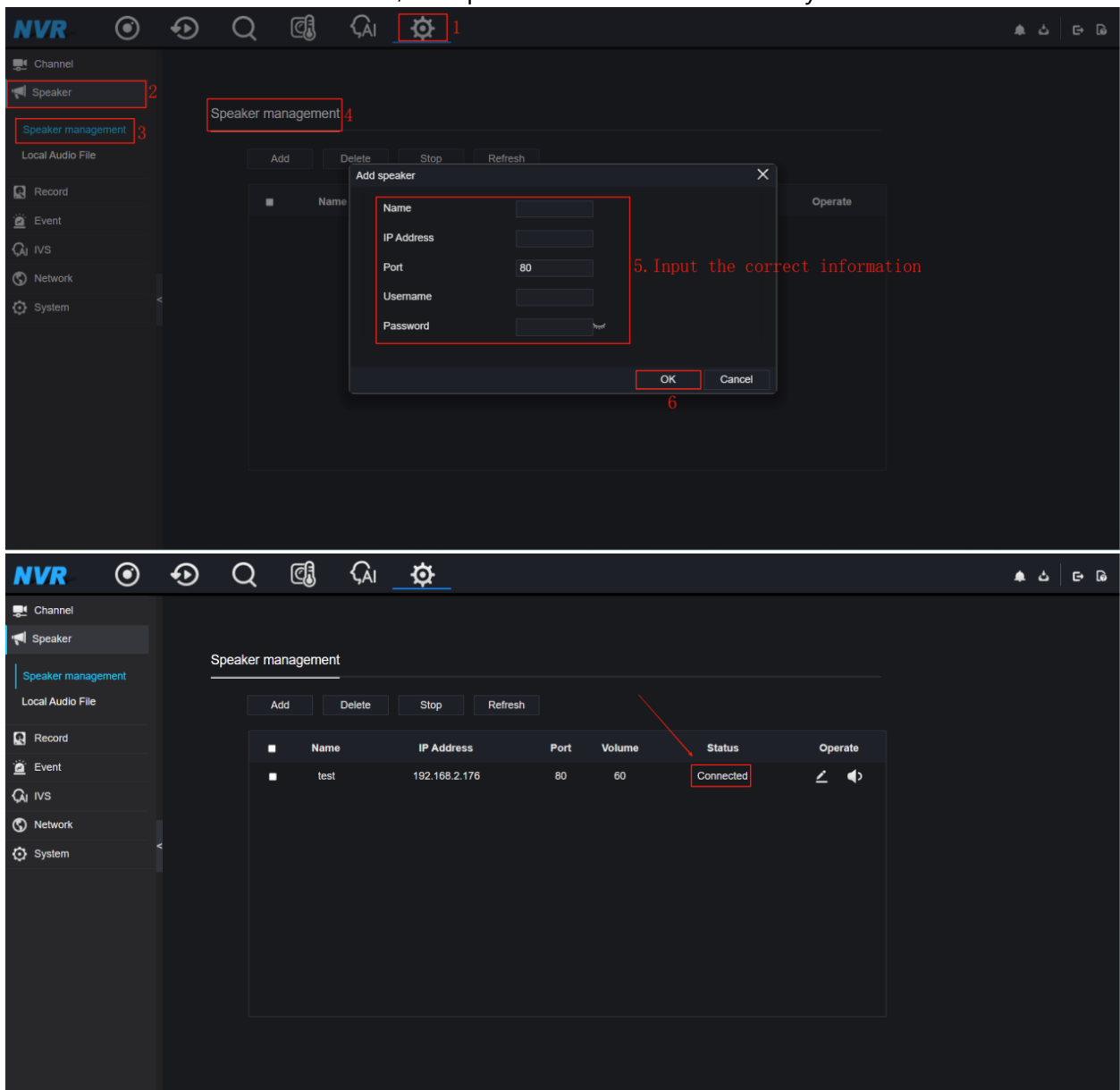
Overview


This document will cover how to add an IP speaker to the NVR and what it can be used for on the NVR.

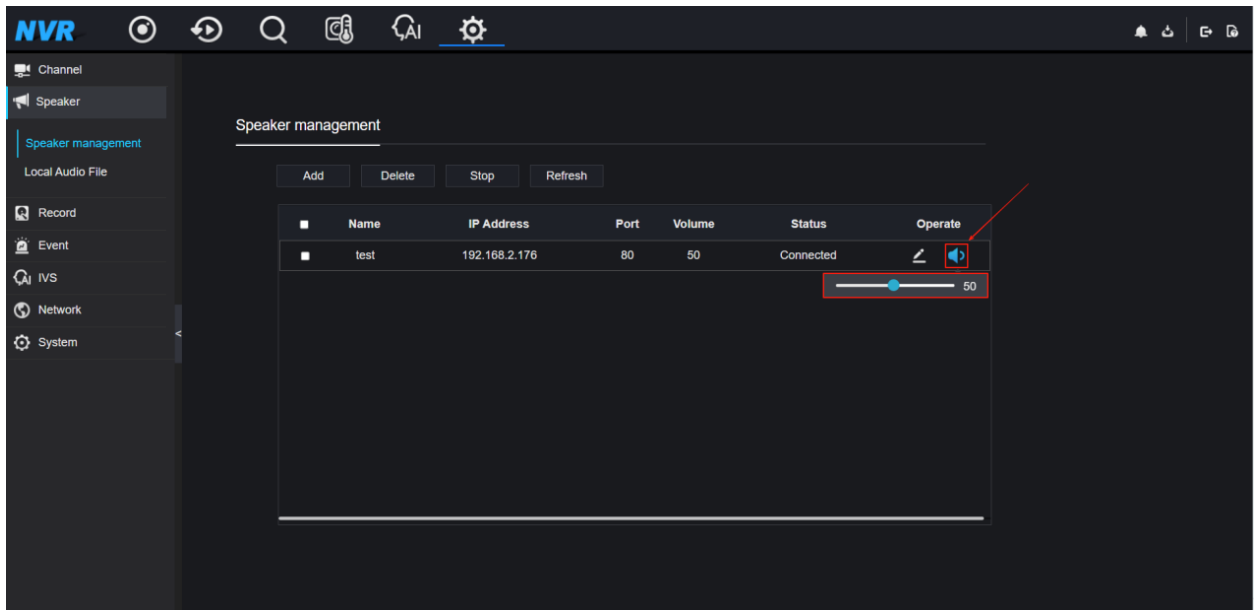
Procedure

1. Add an IP speaker to the NVR by going to [Setting](#) > [Speaker](#) > [Speaker Management](#) and click [Add](#). Input the correct information and confirm that the status is '**Connected**'.

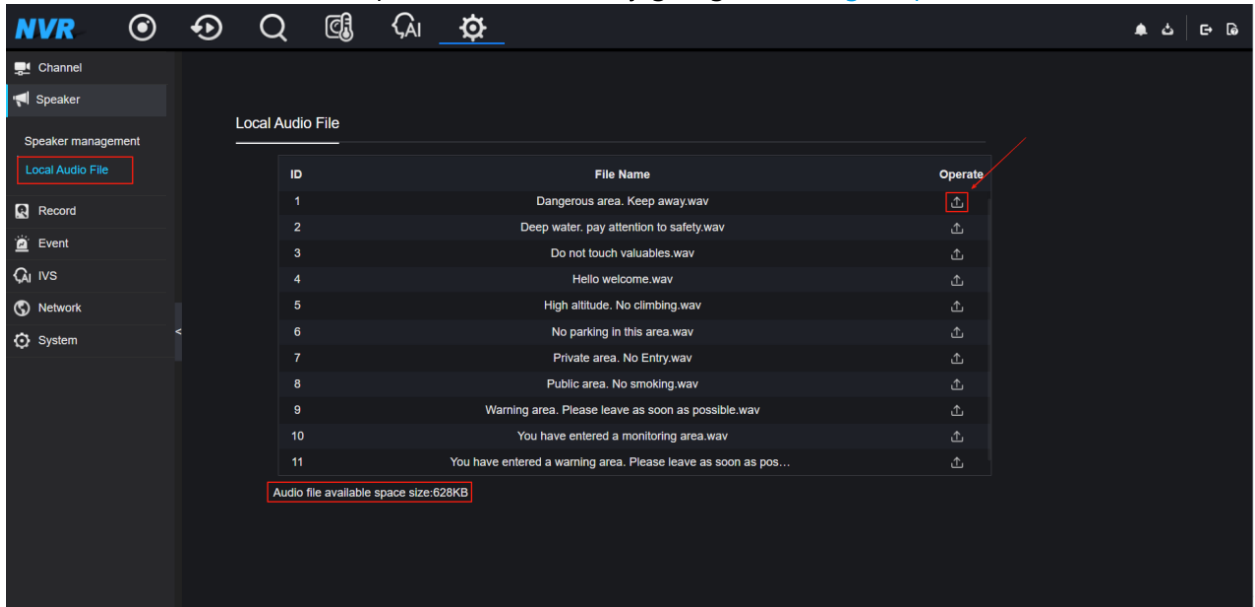
If the connection test is successful, the speaker will be listed and ready for use.



- Adjust the speaker volume by clicking the  speaker icon under the Operate column in [Setting](#) > [Speaker](#) > [Speaker Management](#). The speaker should play a test tone to confirm audio output is functional.

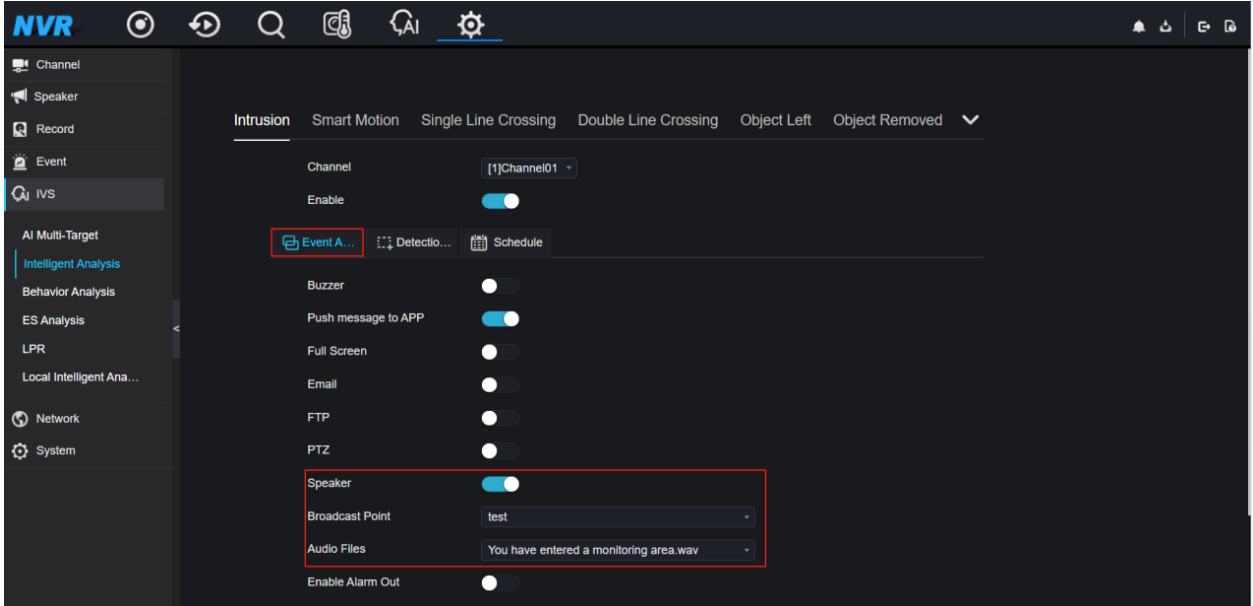


- You can also customize the speaker audio files by going to [Setting](#) > [Speaker](#) > [Local Audio File](#).

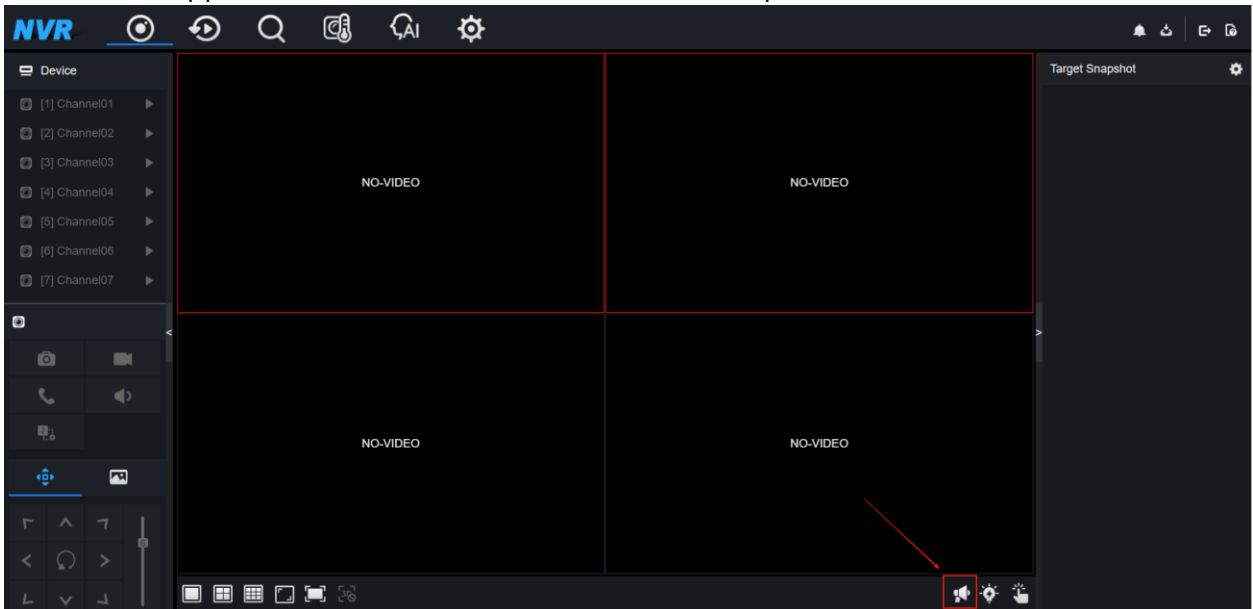


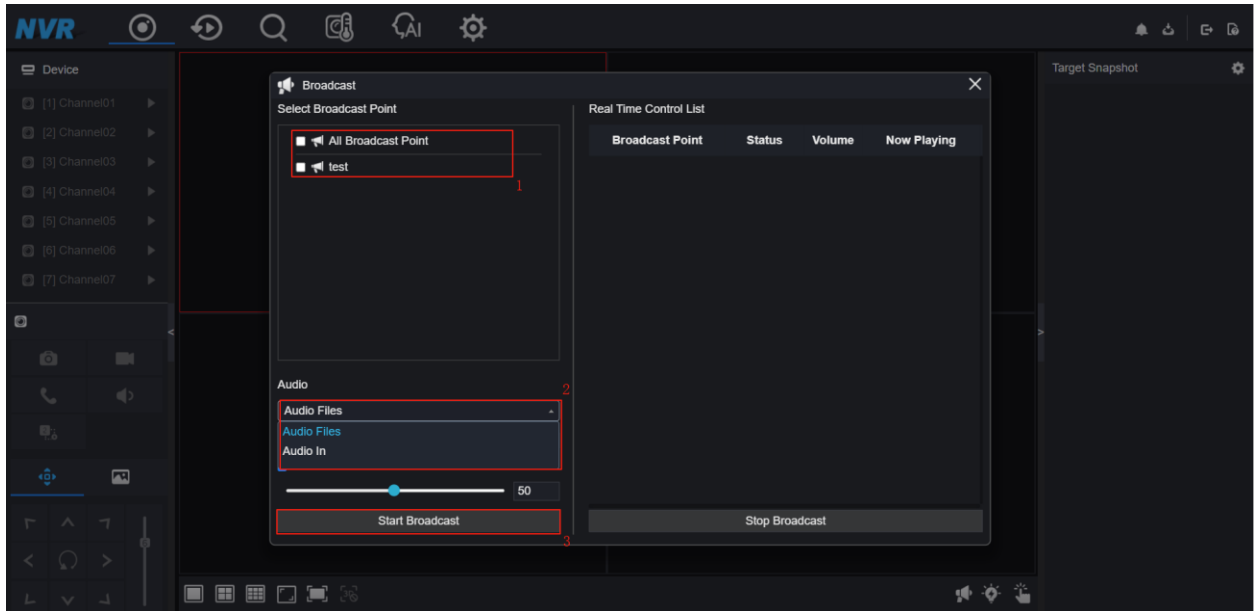
Note: Audio files can only be in WAV format, and the total available space for audio files is limited.

4. **Event Linkage.** Enable **Speaker** in your desired type of alarm under **Event Actions** (motion detection, intrusion, line crossing, etc.), select the speaker you added and the audio file you want to be alerted.



5. **Broadcast.** Supports two audio files- broadcast or audio input broadcast.





FAQs

1. **Does the NVR support two-way intercom with speakers?**

Not supported. Two-way audio communication is not available through the NVR interface. To use two-way intercom features, log in directly to the web interface of the speaker.

Note: Custom NVR firmware can be provided for projects that require this feature.

2. **Does the NVR support the 3rd-party IP speakers via ONVIF protocol?**

Not supported. Currently, the NVR does not support ONVIF-based third-party IP speakers. If you need to integrate a third-party speaker, please provide:

- A physical sample of the speaker
- Relevant API and ONVIF protocol documentation

Note: This information is necessary for integration evaluation.

3. **Does the NVR support speaker schedule settings?**

Not supported. Scheduled broadcasts are not configurable through the NVR. To set up broadcast schedules, access the web interface of the speaker directly.

Note: Custom NVR firmware can be developed for special project requirement.